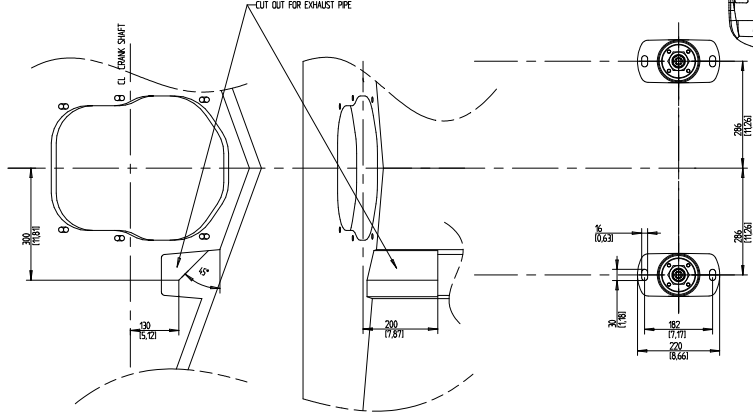
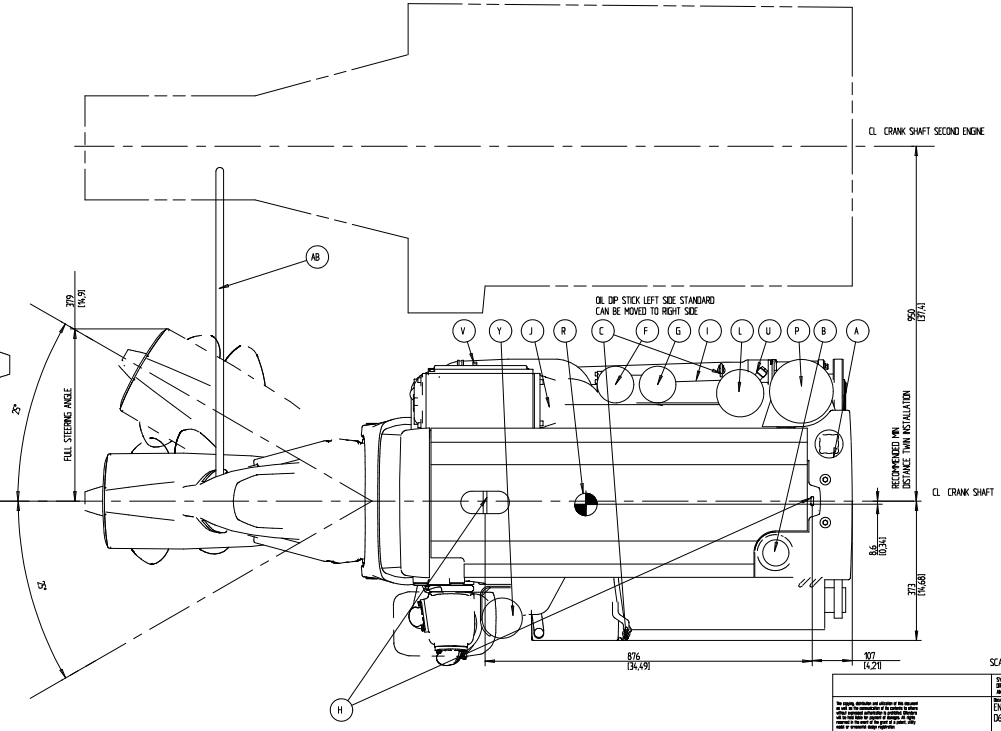
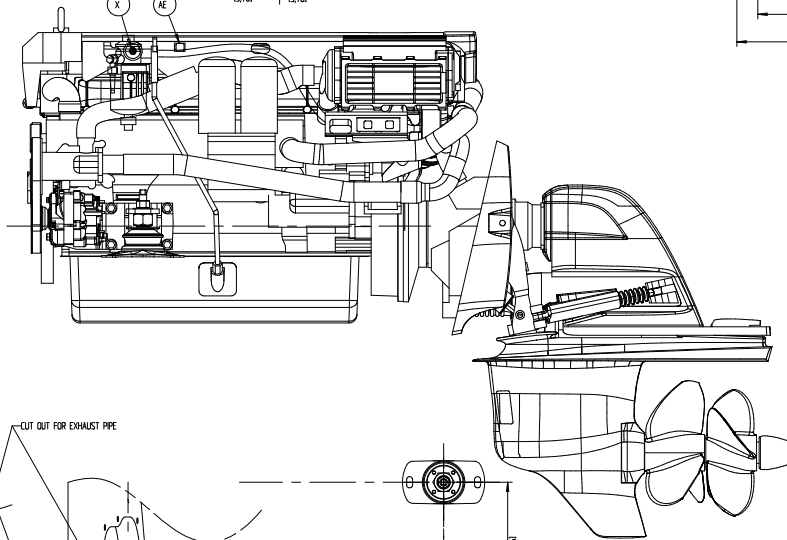
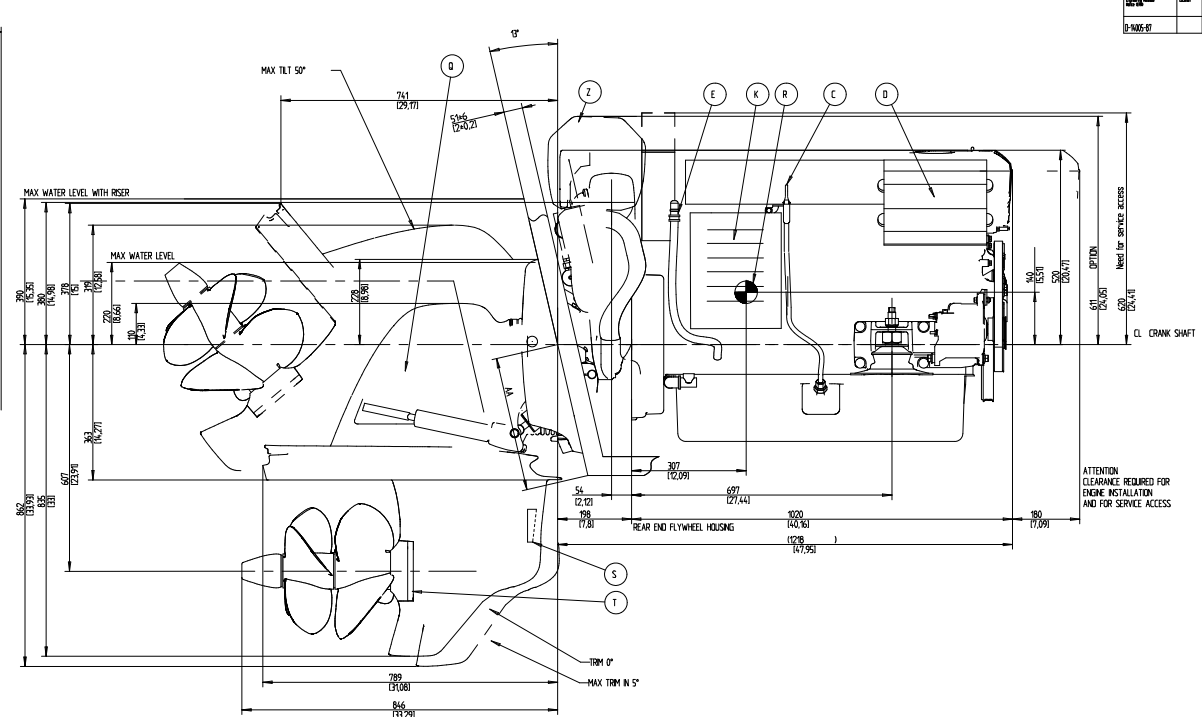
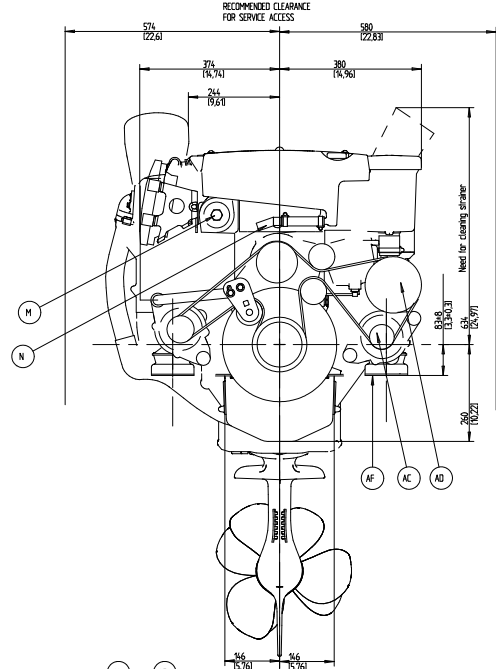


- A WATER FILLER CAP, FRESH WATER
- B OIL FILLER CAP, ENGINE
- C OIL DIP STICK, ENGINE LEFT OR RIGHT SIDE MOUNTED
- D ECU CONTROL UNIT
- E OIL DRAIN (WITH PIPE), ENGINE Ø25
- F OIL FILTER MAIN
- G OIL FILTER BYPASS
- H LIFTING EYE
- I WATER DRAIN, FRESH WATER
- J WATER DRAIN, SEA WATER
- K AIR FILTER
- L FUEL FILTER
- M HOT WATER OUTLET Ø16
- N HOT WATER INLET Ø16
- P STRAINER SEA WATER
- Q OIL DIP STICK DRIVE (UNDER COVER)
- R CENTRE OF GRAVITY
- S WATER INLET DRIVE
- T OIL DRAIN DRIVE BEHIND ADAPTER
- U FUEL INLET CONNECTION Ø10
- V FUEL RETURN TO TANK Ø10
- X ENGINE STOP
- Y CRANK CASE VENTILATION
- Z EXHAUST RISER Ø127 (5"10P10DN)
- AA X-MEASUREMENT SEE 7742299-6
- AB TIE BAR (TWIN INSTALLATION)
- AC EXTRA ALTERNATOR (OPTION)
- AD SEA WATER PUMP
- AE DIAGNOSE CONNECTOR
- AF ELASTIC SUSPENSION (2x)



CL. CRANK SHAFT SECOND ENGINE
 850/214,1
 RECOMMENDED MIN. DISTANCE TWIN INSTALLATION
 86,5/21,8
 CL. CRANK SHAFT
 273/19,681
 816/194,991
 207/14,211