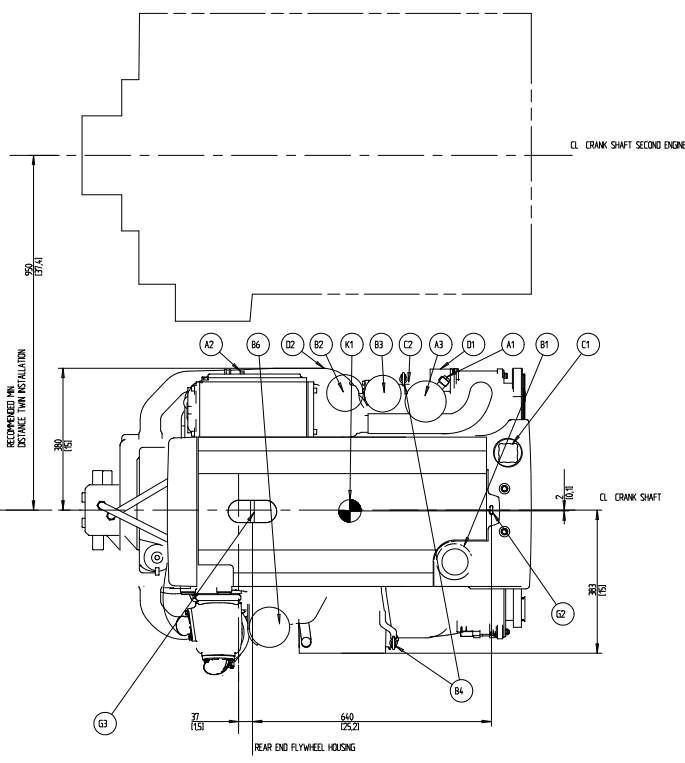
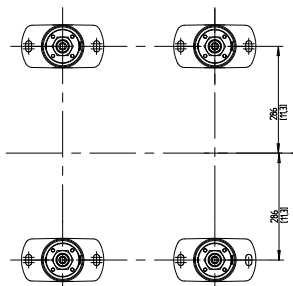
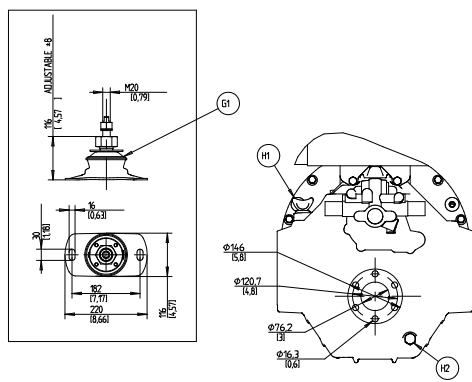


- A1 FUEL CONNECTION INLET, 50mm ID. HOSE
- A2 FUEL CONNECTION OUTLET, 50mm ID. HOSE
- A3 FUEL FILTER/WATER SEPARATOR
- B1 OIL FILLER ENGINE
- B2 OIL FILLER MAIN
- B3 OIL FILLER BYPASS
- B4 OIL DIPSTICK ENGINE PORT STANDARD, CAN BE MOVED TO STARBOARD
- B5 OUTLET FOR OIL BLEE PUMP, 12mm/1/2" ID. HOSE.
- B6 CRANK CASE VENTILATION FILTER
- C1 FRESH WATER FILLER
- C2 FRESH WATER DRAIN POINT
- C3 CONNECTION HOT WATER INLET R 1/2" (OPTION)
- C4 CONNECTION HOT WATER OUTLET R 1/2" (OPTION)
- D1 SEA WATER INLET FOR Ø38 / 1 1/2" ID. HOSE
- D2 SEA WATER DRAIN POINT (2ø)
- D3 SEA WATER PUMP
- D4 WET EXHAUST CONNECTION, 102 mm / 4" ID. HOSE
- D5 EXHAUST RISER (OPTION)
- E1 ECU CONTROL UNIT
- E2 ENGINE STOP
- E3 DIAGNOSE CONNECTOR
- F1 AIR FILTER
- G1 ELASTIC SUSPENSION (4x)
- G2 LIFTING EYE, FRONT, Ø40
- G3 LIFTING EYE, REAR, Ø30
- H1 OIL DIP STICK TRANSMISSION
- H2 OIL DRAIN TRANSMISSION
- J1 POWER STEERING PUMP ALT. EXTRA ALTERNATOR (OPTION)
- K1 CENTRE OF GRAVITY



ALL EQUIPMENT ON THE DRAWING IS NOT STANDARD  
 FOR WEIGHTS AND VOLUME PLEASE REFER TO TECHNICAL  
 DATA SALES GUIDE.  
 SCALE 1:5

		SYMBOLS, DIMENSIONS AND OTHERS SHOWN IN THIS DRAWING ARE IN ACCORDANCE WITH ISO 2556:1988	
		ENGINE DIMENSIONS DA 300 HSBOWE	
DISPOSITION DRAWING		Scale 1:5	
3591838		04	

3591838-04 - 3аруженіє c www.volvopenta.com 26-06-2014 7:03:03