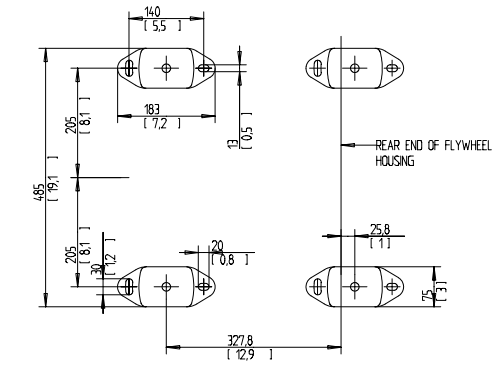
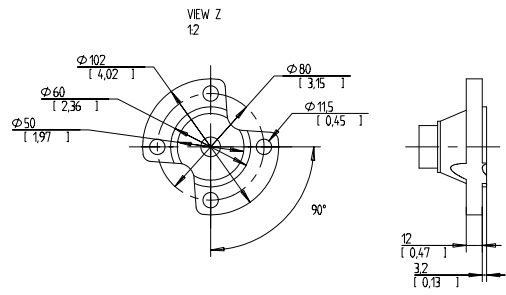
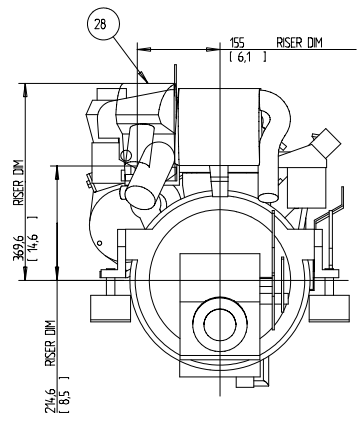
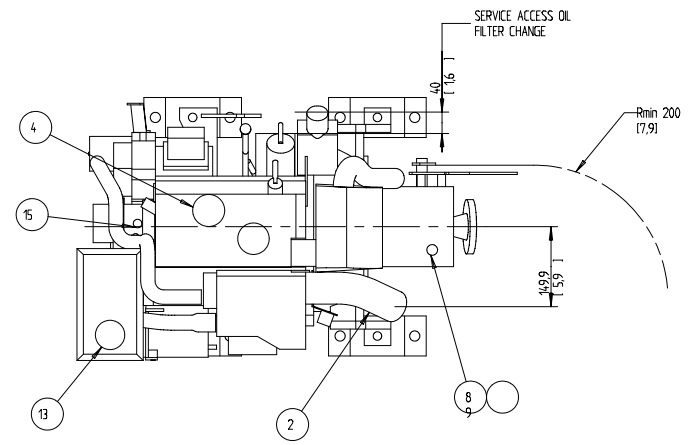
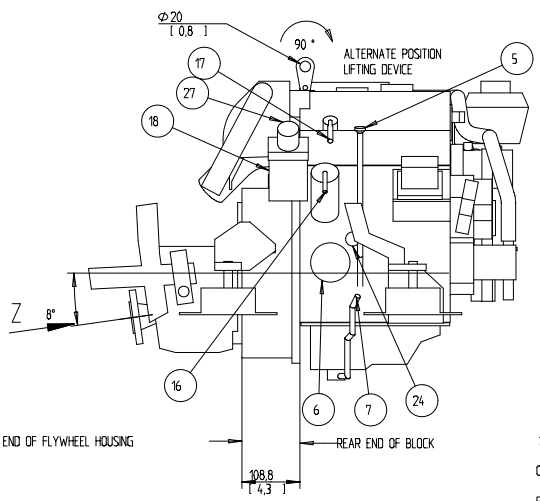
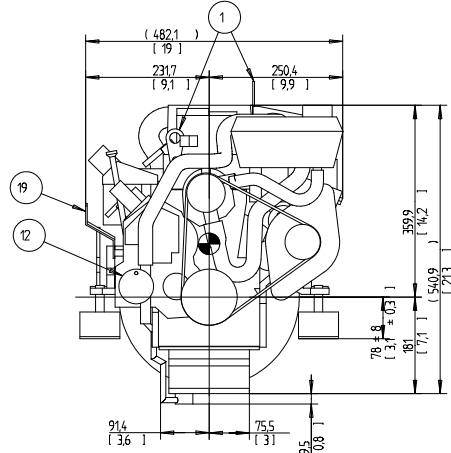
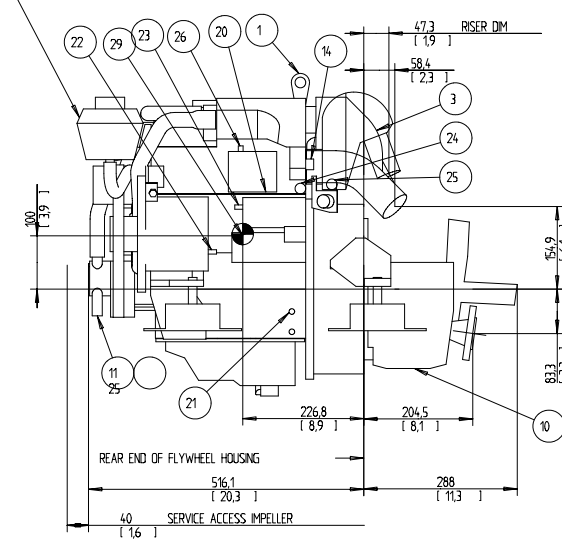


EXPANSION TANK CAN BE BULK HEAD MOUNTED  
THEN USE HOSE Ø75 943366 AND Ø16 952969



SCALE 1:5  
OIL CAPACITY INCLUDING OIL FILTER: 35 LITERS  
FRESHWATER SYSTEM CAPACITY: 4.1 LITERS  
WEIGHTS:  
DRY 137 kg  
OIL & WATER 144 kg

DIMENSION IN MILLIMETRES AND (INCHES)

NR	ITEM
1	LIFTING DEVICE
2	EXHAUST ELBOW FOR HOSE ID 45(1.75)
3	AIR FILTER (SILENCER)
4	OIL FILLING
5	OIL DIPSTICK ENGINE
6	OIL FILTER
7	OIL DRAIN (WITH PUMP) ENGINE ID 8 (0.35)
8	OIL DIPSTICK REVERSE GEAR
9	OIL FILLER CAP REVERSE GEAR
10	OIL DRAIN REVERSE GEAR
11	SEAWATER INLET FOR HOSE ID 19(0.75)
12	SEA WATER PUMP
13	WATER FILLER CAP FRESH WATER
14	HOTWATER OUTLET
15	HOTWATER INLET
16	FUEL CONNECTION FOR HOSE ID 10 (3/8)
17	FUEL RETURN CONNECTION FOR HOSE ID 10 (3/8)
18	FUEL FILTER
19	SPEED CONTROL LEVER
20	CONNECTION BOX FOR EXTENSION CABLE
21	BATTERY MINUS (-) CONNECTION
22	PLUS (+) CONNECTION FOR CHARGING DISTRIBUTOR
23	STARTER BATTERY PLUS (+) CONNECTION
24	WATER DRAIN FRESH WATER
25	WATER DRAIN SEAWATER
26	AUTOMATIC FUSE RESET
27	HAND PRIMER PUMP
28	RISER (OPTIONAL)
29	CENTRE OF GRAVITY

<p>The company, copyright and utilization of this document as well as the consequences of its contents shall remain with the manufacturer unless otherwise stated. All rights reserved. For more information, please contact the manufacturer's service department.</p>	<p>SYMBOLS, DIMENSIONS AND GENERAL DRAWING METHODS STD 90-5005 AND STD 922560</p>	
	<p>ENGINE DIMENSIONS D1-30/MS10A</p>	
<p><b>VOLVO PENTA</b></p>	<p>Document type DIMENSION DRAWING</p>	<p>Doc No 3591410</p>
<p>Doc No 3591410-01</p>	<p>Rev No 101</p>	

3591410-01 - 3арпыжкено с www.volvo-penta.com 26-06-2014 6:51:55