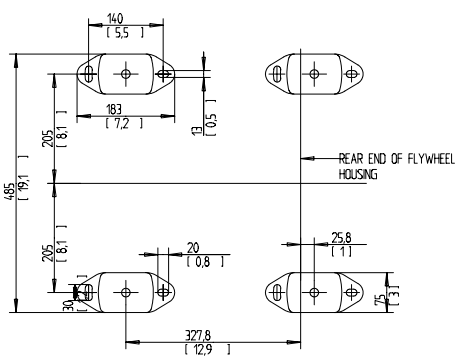
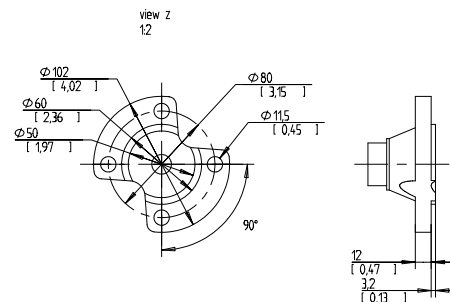
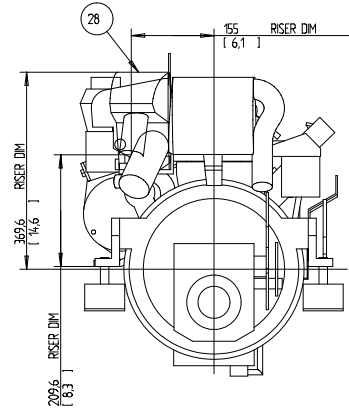
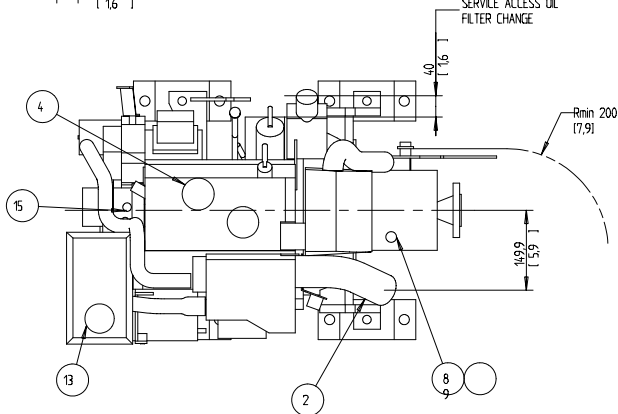
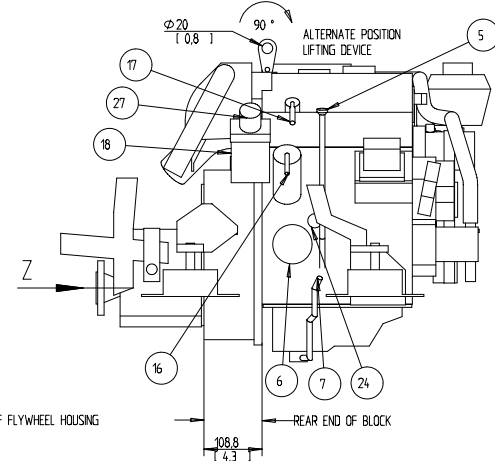
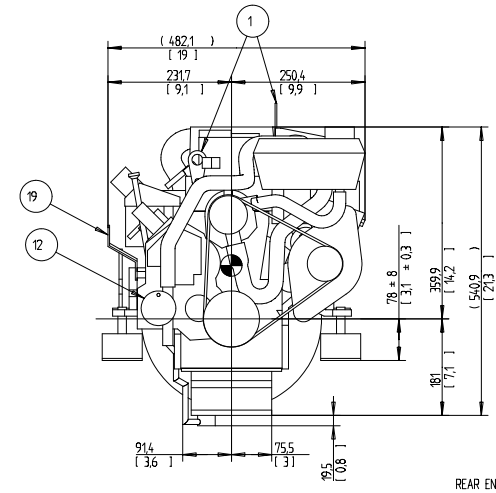
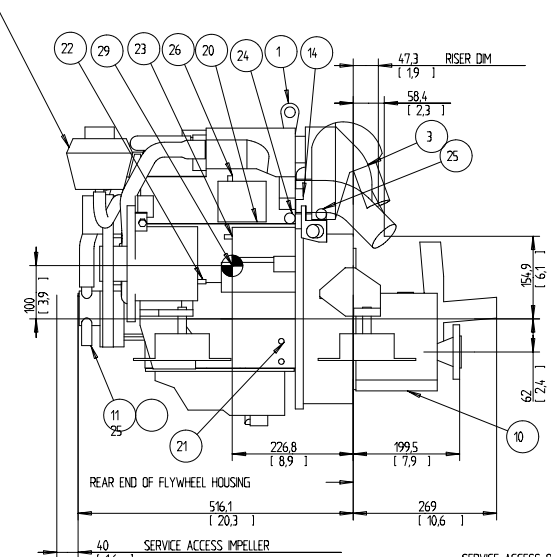


EXPANSION TANK CAN BE BULK HEAD MOUNTED  
THEN USE HOSE Ø75 943366 AND Ø16 952969



SCALE 1:5  
OIL CAPACITY INCLUDING OIL FILTER: 35 LITERS  
FRESHWATER SYSTEM CAPACITY: 4.1 LITERS  
WEIGHTS:  
DRY 137 kg  
OIL & WATER 144 kg

DIMENSION IN MILLIMETRES AND (INCHES)

NR	ITEM
1	LIFTING DEVICE
2	EXHAUST ELBOW FOR HOSE ID 45(1.75)
3	AIR FILTER (SILENCER)
4	OIL FILLING
5	OIL DIPSTICK ENGINE
6	OIL FILTER
7	OIL DRAIN (WITH PUMP) ENGINE ID 8 (0.35)
8	OIL DIPSTICK REVERSE GEAR
9	OIL FILLER CAP REVERSE GEAR
10	OIL DRAIN REVERSE GEAR
11	SEAWATER INLET FOR HOSE ID 19(0.75)
12	SEA WATER PUMP
13	WATER FILLER CAP FRESH WATER
14	HOTWATER OUTLET
15	HOTWATER INLET
16	FUEL CONNECTION FOR HOSE ID 10 (3/8)
17	FUEL RETURN CONNECTION FOR HOSE ID 10 (3/8)
18	FUEL FILTER
19	SPEED CONTROL LEVER
20	CONNECTION BOX FOR EXTENSION CABLE
21	BATTERY MINUS (-) CONNECTION
22	PLUS (+) CONNECTION FOR CHARGING DISTRIBUTOR
23	STARTER BATTERY PLUS (+) CONNECTION
24	WATER DRAIN FRESH WATER
25	WATER DRAIN SEAWATER
26	AUTOMATIC FUSE RESET
27	HAND PRIMER PUMP
28	RISER (OPTIONAL)
29	CENTRE OF GRAVITY

<p>The copyright, title and all other rights in this drawing are reserved by the copyright owner. No part of this drawing may be reproduced, stored in a retrieval system, or transmitted in any form or by any means, electronic, mechanical, photocopying, recording, or by any information storage and retrieval system, without the prior written permission of the copyright owner.</p>	<p>© VOLVO PENTA AB 2014 DRAWING METHODS STD 01-5400 AND STD 522560</p>	
	<p>ENGINE DIMENSIONS D1-30/MS10L</p>	
<p><b>VOLVO PENTA</b></p>		<p>Sheet No. 3591409</p>
<p>Revision No. 101</p>		<p>Scale 1:3</p>

3591409-01 - 3airpykheo c www.volvo-penta.com 26-06-2014 6:51:57